

Description & Features

- Rugged, 2" Forged Brass case and connection
- Forged brass case and socket
- Glycerin filled
- 3/8" Steck-O-Connection
- 3 colored zone dial for easier pressure reading
- 0-9000psi (600bar)

Application

- Hydraulic shoring and irrigation equipment commonly used in long wall mining

Specification

Dial Size

2" (50mm) white aluminum, black lettering, triple color scale: red, green, yellow

Pressure Range

0-9000psi (0-600bar)

Case

One-piece forged brass case

Lens

Polycarbonate

Pointer

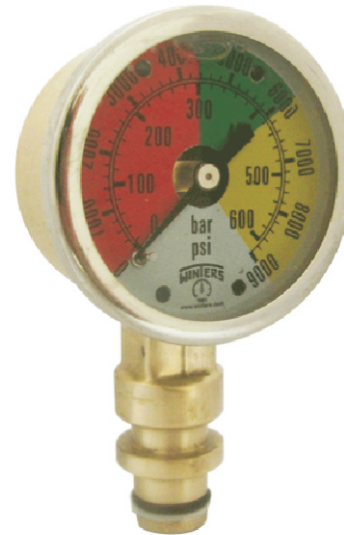
Aluminum, anodized black

Connection

3/8" Steck-O-connection, quick connect with Buna Sealing O-ring and Viton Washer (bottom connection)

Wetted Parts

Brass



Protection

IP65

Process Temperature

-40°F to 150°F (-40°C to 65°C)

Working Pressure

Maximum 75% of full scale value

Over -Pressure Limit

25% of full scale value

Ambient Temperature

-40°F to 150°F (-40°C to 65°C)

Accuracy

±3%-2%-3% of full scale

Order Information

Series/ Dial Size/ Case Materials/ Wetted Parts/ Configuration/ Connection Size/ Thread/ Range/ Option

Dimensions

