

Description & Features

- Watertight casing for dry or liquid filled
- Ranges between 0.4 and 60 bar
- Scale angle 270°
- Accuracy class $\pm 1.6\%$



Specifications

Dial Size

4" (100mm) white aluminum with black figures

Pressure Range

5.8 upto 870psi (0.4 upto 60bar)

Case and Ring

304 case and ring - bayonet bezel

Filing Liquid

Silicone fluid (Option)

Pointer

Aluminum with micrometer adjustment

Movement

Stainless Steel

Pressure element

Double C-Bourdon tube – 316 stainless steel
1/4NPT female – 316L stainless steel

Connection

1/4"NPT female, G1/4 female or R1/4 female

Static pressure

Two times full scale value

Window

Laminated safety glass

Protection

IP65

Ambient Temperature

-4°F to 140°F (-20°C to 60°C)

Medium Temperature

Maximum 120°C/248°F

Accuracy

$\pm 1.6\%$

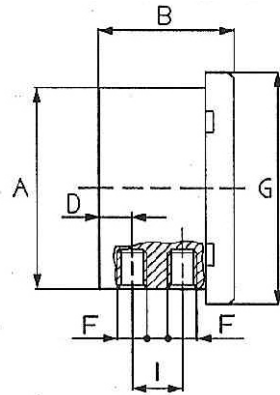
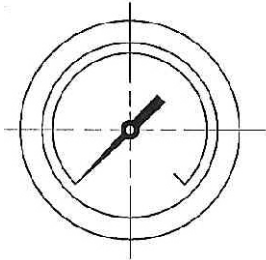
Options

Silicone filled
Oxygen cleaning
Male connections
316 case and ring
Monel wetted parts
Calibration Certificate
3 times scale static pressure

Order Information

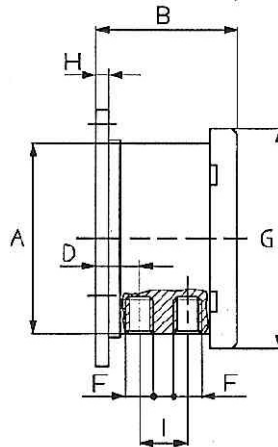
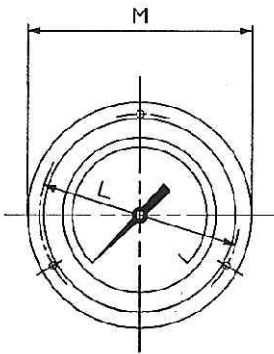
Series/ Dial Size/ Case Materials/ Wetted Parts/ Configuration/ Connection Size/ Thread/ Range/ Option

Dimensions



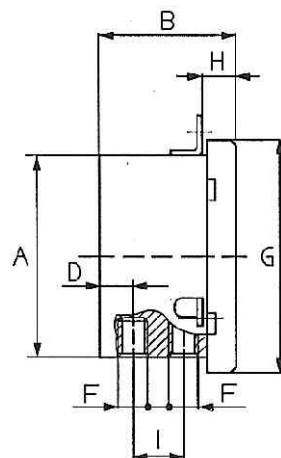
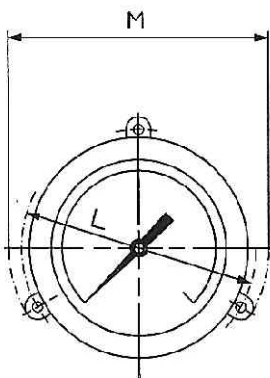
PAD - A
Pressure gauge for Direct Mounting

Model	DN	A	B	D	F	G	I
PAD-A	100	103	64	14	1/4	118	23



PAD - B
Pressure gauge for surface mounting with 3 holes

Model	DN	A	B	D	F	G	H	I	L	M
PAD-B	100	103	70	20	1/4	118	7	23	126	140



PAD - C
Pressure gauge for Back panel flush Mounting with pegs

Model	DN	A	B	D	F	G	H	I	L	M
PAD-C	100	103	64	14	1/4	118	16	23	130	143

Ordering Code PAD

PAD - - - - - - - - - -

Dial Size

4.0"(100mm) 40

Case Materials

304SS T
316SS S

Wetted parts

316SS S
Monel M

Configuration

Direct Mounting (Bottom) A
Surface mounting with 3 holes (Bottom) B
Back panel flush Mounting with pegs (Bottom) C

Connection Size

1/8" 8
1/4" 4
3/8" 3
1/2" 1
Special Z

Thread

NPT F N
BSP(G) F B
BSPT(R) F T
Special Z

Range

1.6bar

Bar	0/0.4	0/0.6	0/1.0	0/1.6	0/2.5	0/4.0
	0/6.0	0/10	0/16	0/25	0/40	0/60

Options

Silicone fluid S Q
Surface mounting with 3 holes S C
Back panel flush Mounting with pegs S H
316 case and ring S 3
Monel tube and socket S W
Oxygen cleaning S L
Calibration Certificate S 4
Other connection size available Z Z