

Description & Features

- Cost effective and reliable.
- Simple and compact design.
- Easy to read dial instruments eliminates accumulated errors of two instruments installations.
- High operating pressure up to 200 bar.
- Differential pressure range upto 10 bar
- Over pressure safe from either side to maximum working pressure.
- Adjustable reed contact switching.
- Indicating mechanism isolated from pressure chamber
- Only switch is also available.
- Wide application in air, gas and liquid media



Applications

Filters, Hydraulic systems, Water treatment plants, Chemical plants, Natural gas processing, Heat exchangers, Gasoline / Diesel engine filters, Pumps and Valves, Compressors.

Specifications

Dial Size

2"(50mm), 2.5"(63mm), 3.5"(80mm), 4"(100mm)
4.5"(115mm) & 6"(150mm)

Case

Stainless steel case or flange

Body Material

316 stainless steel, aluminium, brass or Monel

Wetted parts

Body material, PTFE, SS 304 spring, screw and ceramic magnet.

Connection

1/4", 1/2", 3/8" in NPT, BSP, BSPT

Seals

Buna-N (Standard) or Viton

Porting

In line, Back & Bottom

Migration of media

Marginal

Protection

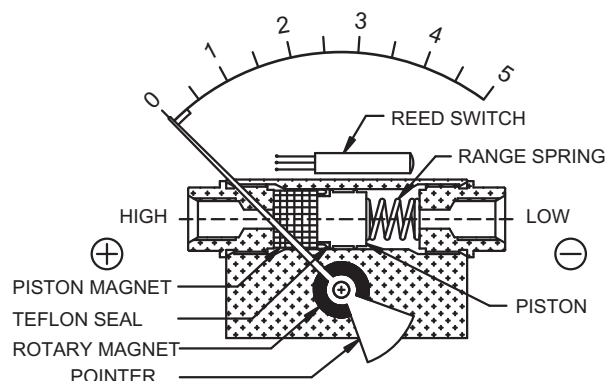
IP 65

Accuracy

±2% (Ascending)

Window

Glass, acrylic or toughened glass



Pressure range

0-0.25 to 0-10 bar (0-5psi to 0-150 psi)

Working pressure

200 bar / 3000 psi for Aluminium
400 bar / 6000 psi for 316 SS

Media Temperature

80°C/ 175 °F

Operating principle

Magnetic coupling using piston & spring.

Switch

SPST or SPDT, one or two. Switches are field adjustable. The set points can be increased or decreased externally with a simple screwdriver adjustments. When two switches are used, either switch can be adjusted independently.

Options

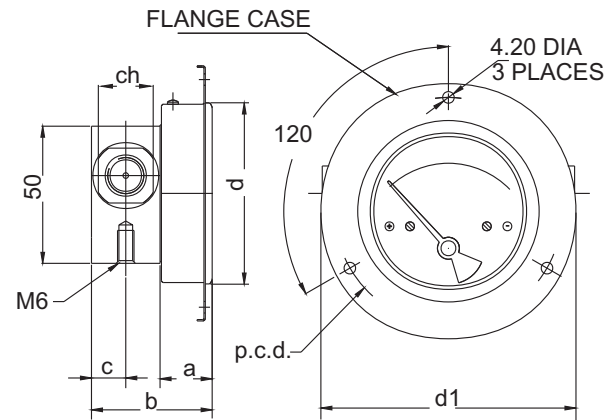
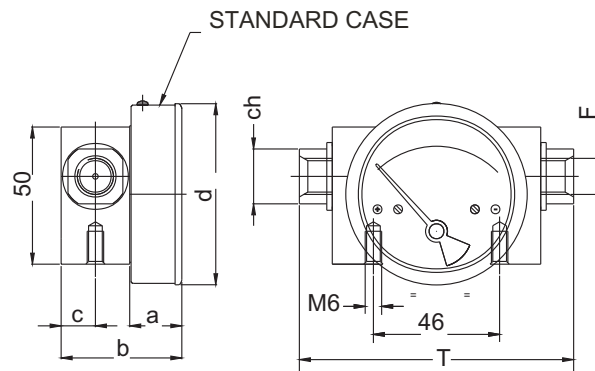
Glycerine filling, maximum adjustable pointer, dual scale
Direct, front panel flange, 2" pipe mounting
Other connection size available
Other internal parts in Aluminium, or SS-316 as per the body

Order Information

Series/ Dial Size/ Case Materials/ Wetted Parts/ Configuration/ Connection Size/ Thread/ Range/ Option

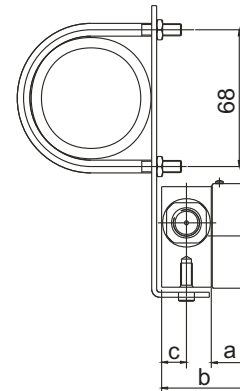
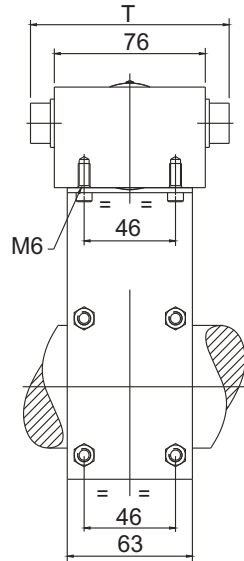
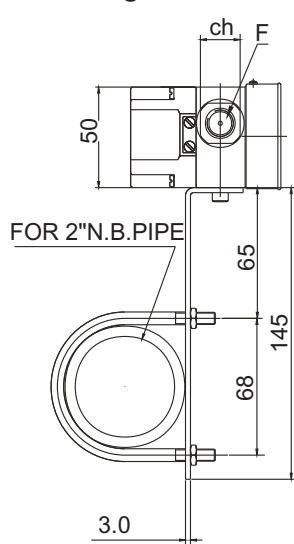
Dimensions

Standard Dimensions



DIAL Ø	F	a	b	c	d	d1	T	ch	p.c.d.
50 (2")	1/4"BSP - 1/4"NPT	18	43	12.5	53	79	100	20	69
63 (2.5")	1/4"BSP - 1/4"NPT	19	44	12.5	66	93	100	20	83
80 (3.5")	1/4"BSP - 1/4"NPT	19	44	12.5	83	109	100	20	99
100 (4")	1/4"BSP - 1/4"NPT	19	44	12.5	104.3	131	100	20	121
115 (4.5")	1/4"BSP - 1/4"NPT	19	44	12.5	119.7	146	100	20	136
150 (6")	1/4"BSP - 1/4"NPT	19	44	12.5	154.3	181	100	20	171

Mounting Brackets



BRACKET MOUNTING FOR GAUGE+ SWITCH

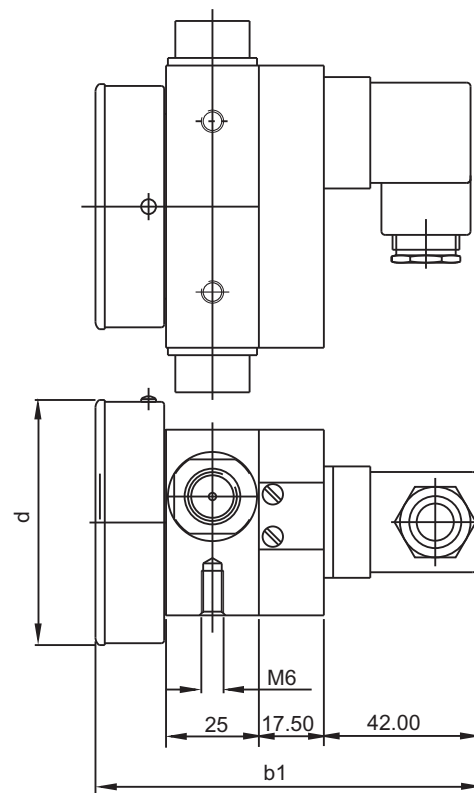
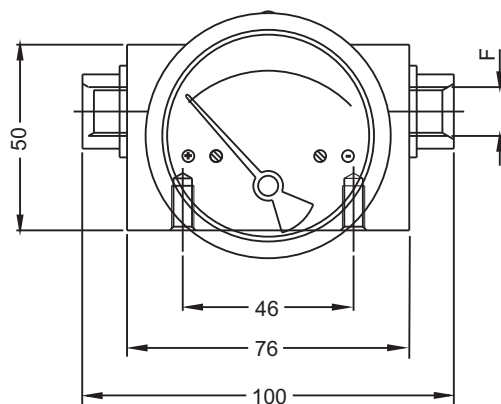
BRACKET MOUNTING FOR GAUGE

DIAL O	F	a	b	c	T	ch
50 (2")	1/4"BSP - 1/4"NPT	18	43	12.5	100	20
63 (2.5")	1/4"BSP - 1/4"NPT	19	44	12.5	100	20
80 (3.5")	1/4"BSP - 1/4"NPT	19	44	12.5	100	20
100 (4")	1/4"BSP - 1/4"NPT	19	44	12.5	100	20
115 (4.5")	1/4"BSP - 1/4"NPT	19	44	12.5	100	20
150 (6")	1/4"BSP - 1/4"NPT	19	44	12.5	100	20

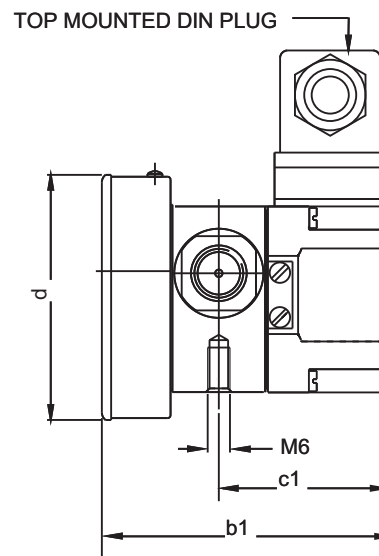
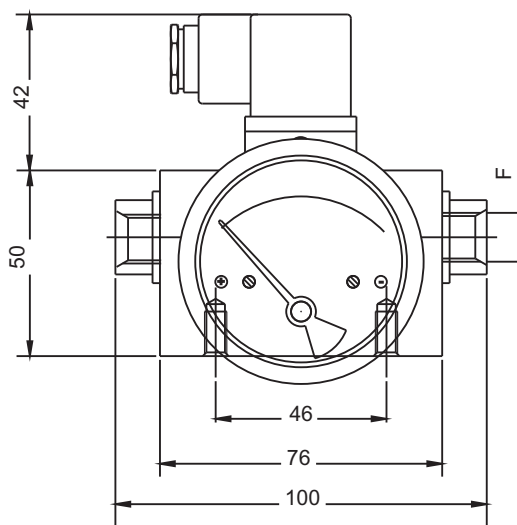
PPD Piston Sensing Element for High Pressure Gauge

Gauge + Switch with reed contacts with DIN plug at back

DIAL	F	d	b1
50 (2")	1/4"BSP - 1/4"NPT	53	102.5
63 (2.5")	1/4"BSP - 1/4"NPT	66	103.5
80 (3.5")	1/4"BSP - 1/4"NPT	83	103.5
100 (4")	1/4"BSP - 1/4"NPT	104.3	103.5
115 (4.5")	1/4"BSP - 1/4"NPT	119.7	103.5
150 (6")	1/4"BSP - 1/4"NPT	154.3	103.5

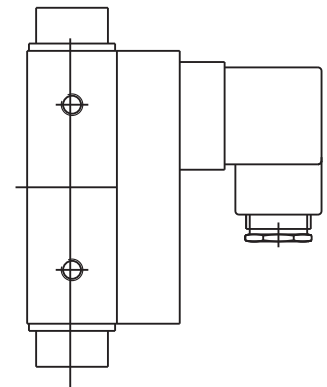
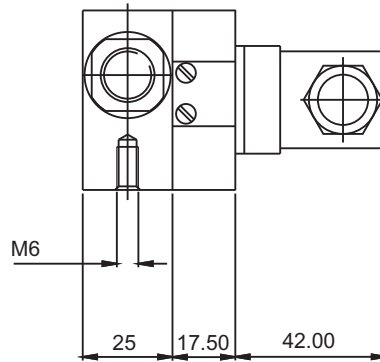
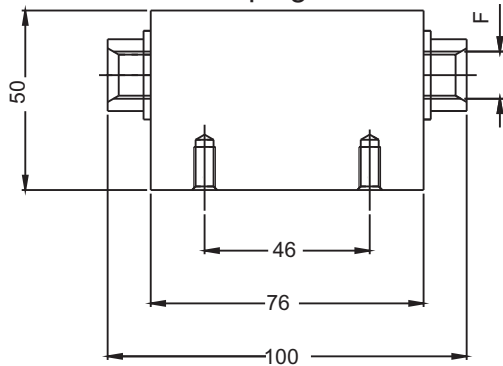


Gauge + Switch with reed contacts with DIN plug on top



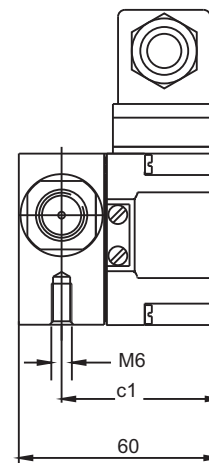
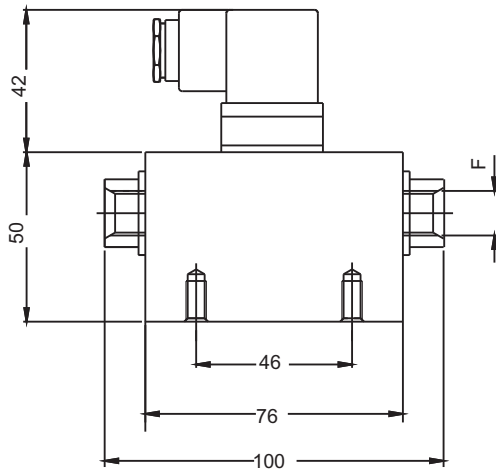
DIAL	F	b1	c1	d
50 (2")	1/4"BSP - 1/4"NPT	78	47.5	53
63 (2.5")	1/4"BSP - 1/4"NPT	79	47.5	66
80 (3.5")	1/4"BSP - 1/4"NPT	79	47.5	83
100 (4")	1/4"BSP - 1/4"NPT	79	47.5	104.3
115 (4.5")	1/4"BSP - 1/4"NPT	79	47.5	119.7
150 (6")	1/4"BSP - 1/4"NPT	79	47.5	154.3

Switch with DIN plug at back



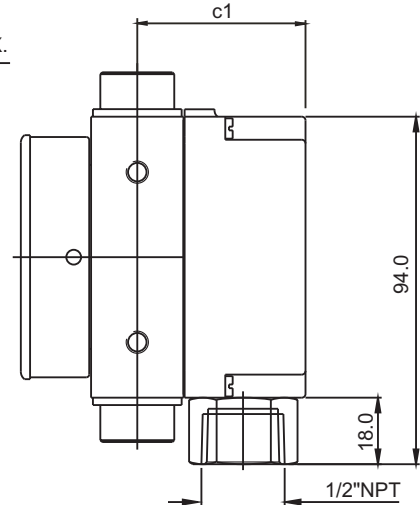
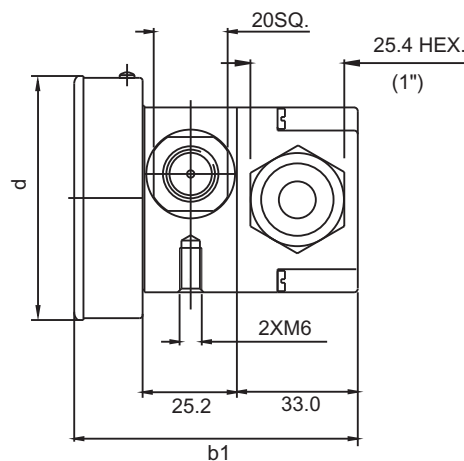
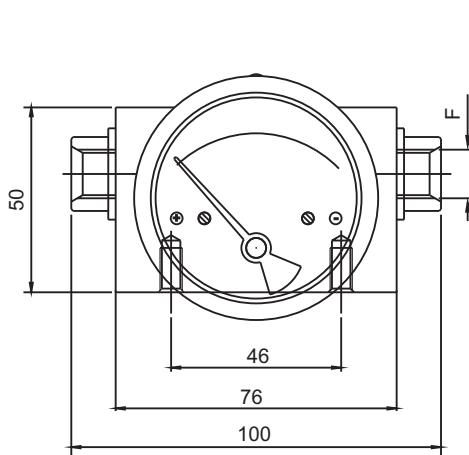
F=1/4" NPT - 1/4" BSP

Switch with DIN plug on top



F=1/4" NPT - 1/4" BSP , C1=47.5

Gauge + Switch with reed contacts with terminal strip & 1/2" conduit connection



DIAL	F	b1	c1	d
50 (2")	1/4"BSP - 1/4"NPT	78	47.5	53
63 (2.5")	1/4"BSP - 1/4"NPT	79	47.5	66
80 (3.5")	1/4"BSP - 1/4"NPT	79	47.5	83
100 (4")	1/4"BSP - 1/4"NPT	79	47.5	104.3
115 (4.5")	1/4"BSP - 1/4"NPT	79	47.5	119.7
150 (6")	1/4"BSP - 1/4"NPT	79	47.5	154.3

Ordering Code PPD

Example		Code	Descriptions																		
Series	PPD																				
Type	W	G	Gauge	S	Switch																
		W	Gauge + Switch																		
Body material	B	A	Aluminium	B	Brass																
		S	316 stainless steel	M	Monel																
		H	Heavy duty Al. (5000 psi) with 32mm thick body.																		
Dial size	35	20	2.0" (50 mm)	40	4.0" (100 mm)																
		25	2.5" (63 mm)	45	4.5" (115 mm)																
		35	3.5" (80 mm)	60	6.0" (150 mm)																
Connection	4N	4B	1/4" BSP (Female) (On request,longer lead time)																		
		4N	1/4" NPT (Female)																		
		4T	1/4" BSPT (Female) (on request,longer lead time)																		
		ZZ	Special connection sizes using adaptor																		
Porting	1	1	In-line (Standard)	3	Bottom																
		2	Rear / Back	6	In-line & Bottom																
Case type	SS	SS	SS 304 with a rubber ring (standard)																		
		SF	SS 304 flange with a rubber ring (standard flange)																		
Window	A	F	Glass (standard)	A	Acrylic																
		T	Toughened glass																		
Seal	B	B	Buna-N (standard)	E	EPDM																
		V	Viton																		
Switch	3	0	None																		
		1	One SPST, with a DIN plug*																		
		2	One SPST, with a terminal strip																		
		9	One SPST, with built in relay																		
		3	Two SPSTs, with a DIN plug*																		
		4	Two SPSTs, with a terminal strip																		
		5	One SPDT, with a DIN plug*																		
		6	One SPDT, with a terminal strip																		
		7	Two SPDTs, with two DIN plugs*																		
		8	Two SPDTs, with a terminal strip																		
			* DIN plug : we mount it on the top,on the plastic switch cover.																		
			However we can mount it at the back as a request																		
Standard Ranges	2.5 bar	Kg/cm bar	0.25	-	0.5	0.75	1	-	1.6	2	-	2.5	3	3.5	4	5	-	6	7	9	10
		Mbar	0.25	-	0.5	0.75	1	-	1.6	2	-	2.5	3	3.5	4	5	-	6	7	9	10
		psi	250	-	500	750	1000	-	-	-	-	-	-	-	-	-	-	-	-	-	-
		kPa	-	5	8	-	15	20	25	30	40	-	40	50	60	-	80	-	100	-	-
			25	-	50	75	100	-	160	200	-	250	300	350	400	500	-	600	700	900	1000
Options	BC	0	None																		
		A	Glycerine filling (Affects accuracy)																		
		B	Red follower pointer on acrylic window (Affects accuracy)																		
		C	Dual scale																		
		D	Colour band																		
		E	Strainer in (+) connection																		
		F	Reverse Port**																		
		D	NACE																		
		E	Silicone Oil*																		
			Other ranges on request																		

SPST Specifications
 5 VA AC or DC (max)
 175 V AC or DC (max)
 0.25 Amp AC or DC (max)

Built in relay
 230 V AC, 1 Amps.

SPST Specifications
 10 VA AC or DC (max)
 150 V AC or DC (max)
 0.5 Amp AC or DC (max)

* DIN plug : we mount it on the top, on the plastic switch cover.
 However we can mount it at the back as a request

Other ranges on request.

Limitations for making combinations:

- Glycerine filling will not have follower pointer
- No follower pointer available in 6" (150 mm)

Specifications and dimensions given in this leaflet represent the state of engineering at the time of printing, modifications may take place and materials specified may be replaced by others without prior notice.