

Description & Features

- Differential ranges from 0 to 0.25bar up to 10 bar
- In-line, bottom and back porting
- 80mm & 100mm dial sizes.
- IP-65 weather protection for gauges & switch
- Piston with a seal to minimize migration of media
- Strong SS 316 instrument body
- Up to 400bar static pressure
- Modular construction, light in weight
- Field installable & adjustable reed switches
- Rugged and cost effective

Applications

For use in monitoring differential pressure in filters, strainers, hydraulic systems, water treatment plants, chemical plants, natural gas processing, gasoline/diesel engine filters and valves and compressors.

Specifications

Dial Size

3.5"(80mm), 4"(100mm)

Case

Stainless steel

Body Material

Engineering Polymer

Wetted parts

316stainless steel, 302SS compression spring seal seal, ceramic magnet

Connection

1/4", 1/2", 3/8" in NPT, BSP, BSPT

Seals

Buna-N (Standard), Viton

Porting

In line, rear or bottom

Migration

Minor from high to low port

Protection

IP 65

Window

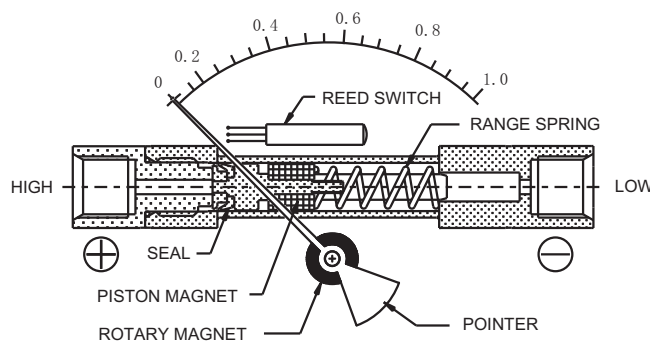
Float glass, toughened glass or acrylic

Mounting

Direct, front flange, 2" pipe mounting & surface

First marking on the scale

15% of the FSD



Pressure range

0-0.25 to 0-10 bar

Maximum Working pressure

100, 250 & 400bar

Process Temperature

80°C/ 175 °F

Over range protection

Up to the max. working pressure from high & low side

Sensing element

Magnetic piston with compression spring

Accuracy

±3%

Switch

SPST or SPDT, one or two. Switches are field adjustable. The set points can be increased or decreased externally with a simple screwdriver adjustments. When two switches are used, either switch can be adjusted independently.

Options

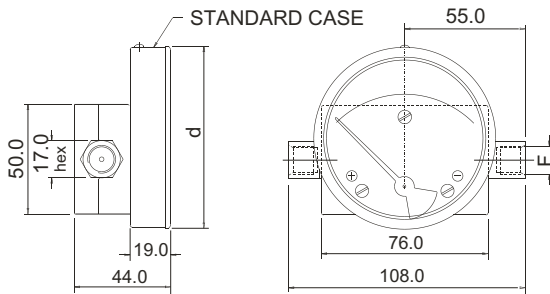
Dual scale
Glycerine filling
maximum adjustable pointer
Strainer - wire mesh in high port
Follower pointer on acrylic window
Other internal parts in Aluminium, or 316SS as per the body

Order Information

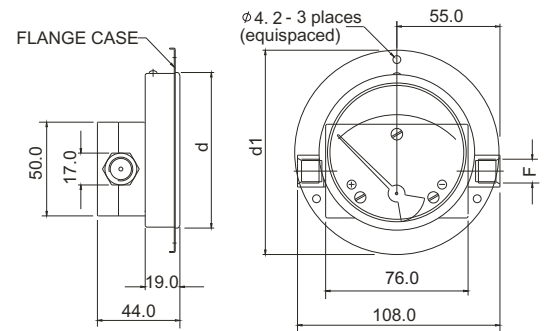
Series/ Dial Size/ Case Materials/ Wetted Parts/ Configuration/ Connection Size/ Thread/ Range/ Option

Dimensions

SS case with rubber ring (std,)

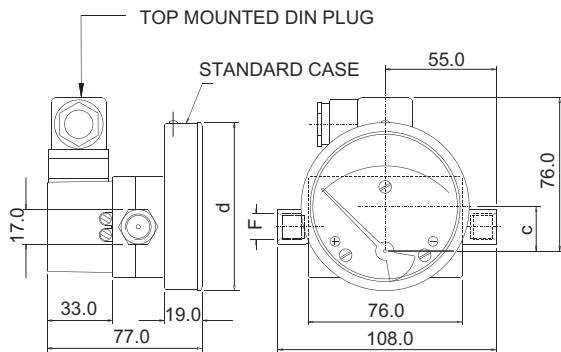


SS case with rubber ring and integral front flange

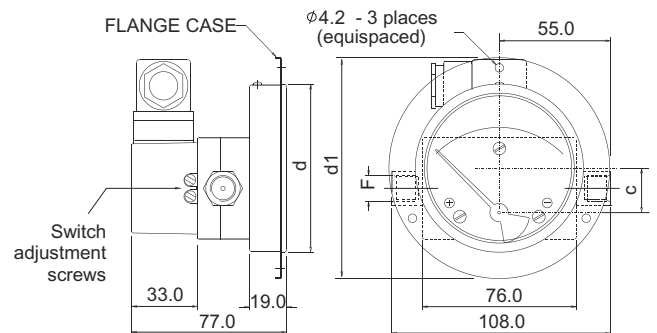


Gauge + Switch

DIN plug at the top with std. case



DIN plug at the top with front flange case



NOTE - 1) For gauge with switch having DIN at back, dimension 77.0 will be 119.0 mm
2) For gauge with switch having DIN at low pressure side, dimension 108.0 will be 125.0 mm

DIAL	F	c	d	d1
80 (3.5")	1/4" BSP - 1/4" NPT	24.0	83.0	109
100 (4.0")	1/4" BSP - 1/4" NPT	22.0	104.3	131

* PANEL CUTOUT = d + 1

Switch specifications :

SPST :

Contact Rating : 10VA AC(rms) or DC(max.)
Switching current : 0.5 Amp AC(rms) or DC (max.)
Switch Voltage : 150 V AC (rms) or DC (max.)

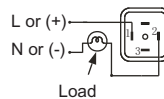
SPDT :

Contact Rating : 5VA AC(rms) or DC(max.)
Switching current : 0.25 Amp AC(rms) or DC (max.)
Switch Voltage : 175 V AC (rms) or DC (max.)

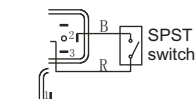
Connection Diagram :

One SPST switch

Reed switches & Din plug connection
View of socket for supply connections

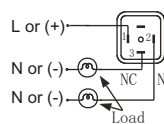


View of plug after removing the socket

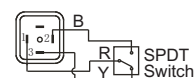


One SPDT switch

Reed switches & Din plug connection
View of socket for supply connections



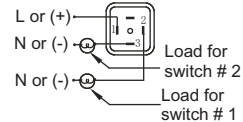
View of plug after removing the socket



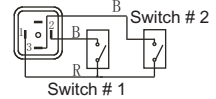
R=Red, B=Black, Y=Yellow, L=Live or +ve supply, N=Nutral or -ve supply

Two SPST switches

Reed switches & Din plug connection
View of socket for supply connections



View of plug after removing the socket



Two SPDT switches

Note : Similar connection to be done for both DIN plugs

Ordering Code PTD

Example	Code	Descriptions									
Series	PTD										
Type	W	G Gauge W Gauge + Switch									
Body material	E	A Aluminium (anodized) B Brass S SS-316									
Dial size	35	35 3.5" (80 mm) 40 4.0" (100 mm)									
Case / window (IP65)	S	S SS case with rubber ring (standard) F SS case with rubber ring and integral front flange									
Differential range	2.5bar	Bar scale <table border="1"> <tr> <td>0.25</td><td>→ 0.4</td><td>0.6</td></tr> <tr> <td>1.0</td><td>1.6</td><td>2.5</td></tr> <tr> <td>4</td><td>6</td><td>10</td></tr> </table>	0.25	→ 0.4	0.6	1.0	1.6	2.5	4	6	10
0.25	→ 0.4	0.6									
1.0	1.6	2.5									
4	6	10									
Porting	R	O other ranges (single or dual scale) please specified as text. I In-line/side (standard) switch available R Rear / back switch option not possible B Bottom switch available									
Port threading 2x	4B	4B 1/4" BSP (Female) (standard) Built-in threading 4N 1/4" NPT (Female) with SS 316 adaptor 4P 1/4" BSP (Male) with SS 316 adaptor 2P 1/2" BSP (M) with SS 316 adaptor 2N 1/2" NPT (F) with SS 316 adaptor									
Cup seal on piston	B	B Nitrile Buna (standard) O ring also of same material V Viton O ring also of same material									
Operating pressure max	1	1 100 bar (standard) 2 250 bar 4 400 bar									
Mounting bracket	2	1 without (standard) 2 Wall or 2" horizontal or vertical pipe, common for gauge & switch									
Switch IP65 & CE	1	1 Without, std. specify set points while ordering Two SPSTs 10W 150V (AC/DC max) / 0.5 A 45 to 100% of the range. Hysteresis 25% 2 One SPDT 5VA 175V (AC/DC max) / 0.25 A 3 Two SPDTs 5VA 175V (AC/DC max) / 0.25 A 35 to 100% of the range. Hysteresis 15%									
Wiring options	1	1 DIN plug at the top (standard) 2 DIN plug on the LP side 3 DIN plug at the back 4 2 DIN plugs for 2 SPDTs (on LP side & top) choose 5 PG cable gland on the LP side, terminal strip inside									
Certifications	2	1 Certificate of conformance 2 Certificate of accuracy & class 3 Material certificate for wetted parts 4 Hydrostatic test / pressure test 5 other, please specify									
Strainer / wire mesh	S	S Blue / red / yellow / green 250 pcs / year min order qty T Integrated in + (high) port									
Options	S	F Float Glass A Acrylic H Hardened glass G Glycerine S Silicone M Adjustable red maximum follower pointer on acrylic window R + right / -left Pointer moves from right to left, anticlockwise									