

# PMD Magnetic Differential Gauge

## Description & Features

- Compact, lightweight, reliable and most important, affordable.
- Stainless steel
- 1/8" in NPT
- vibration resistant, makes it rugged
- Suitable for air and other non corrosive gases and fluids

## Application

- Monitor air-handling units.
- Measurement of fan & blower pressure.
- Monitor condition of the filter on laminar flow devices.
- Pressure drop across filters.
- Pressure drop across orifice plate for flow determination.
- Level measurement.
- Spinning machines.



## Specifications

### Dial Size

4-9/16" (112mm), on request 4.5" (115mm) and 6.0" (150mm) Front flange.

### Range

0...25 to 0...1250mm of water

### Case Material

304 stainless steel

### Lens

Glass

### Pointer

Aluminum black adjustable

### Seal

Buna-N (standard)

### Wetted parts

Diaphragm, body material, 302 stainless steel spring & ceramic magnet

### Connection

1/8" in NPT (F)

### Protection

IP65/NEMA-4

### Working Pressure

Maximum 35psi (2.4bar )

### Working Temperature

140°F (60°C)

### Accuracy

±3% of the FSD (Ascending)

### Option

Dual scale.  
Units other than mm/inch of water.  
Surface mounting.

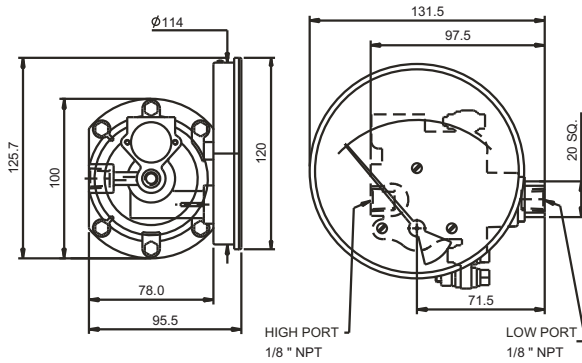
## Order Information

Series/ Dial Size/ Case Materials/ Wetted Parts/ Configuration/ Connection Size/ Thread/ Range/ Option

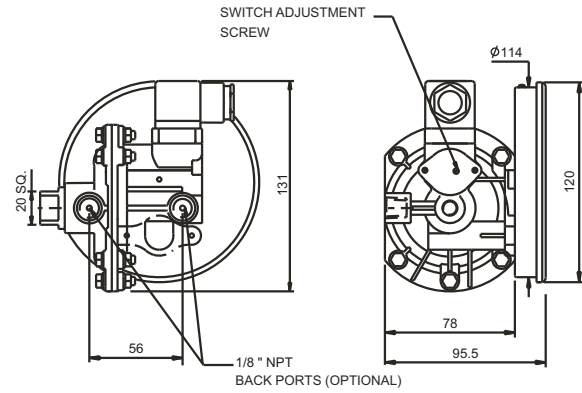
# PMD Magnetic Differential Gauge

## Dimensions

### STANDARD DIMENSIONS

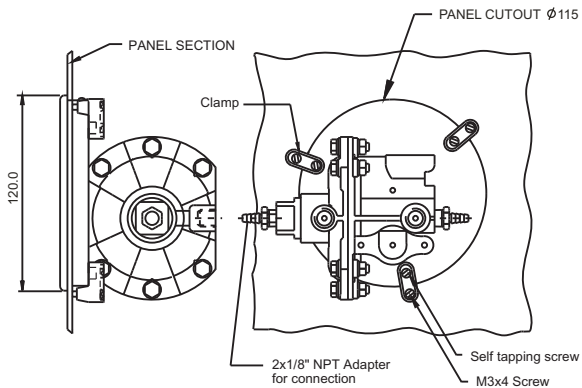


### GAUGE+SWITCH WITH REED CONTACTS WITH A DIN PLUG

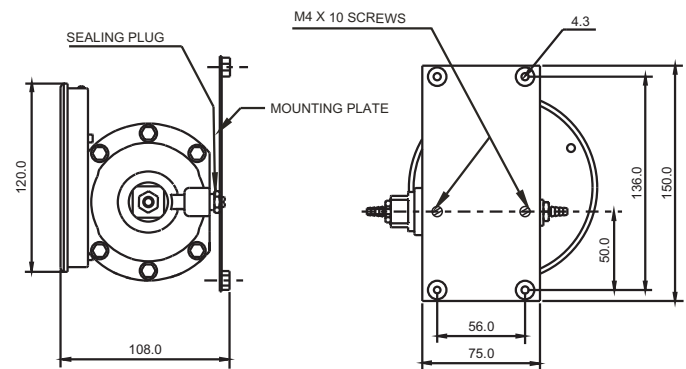


This instrument with its off-center profile can still be easily inserted in a 115 mm panel cutout.

### FLUSH MOUNTING DETAILS



### SURFACE MOUNTING DETAILS



# PMD Magnetic Differential Gauge

## Ordering Code PMD

Example Code Descriptions

Series PMD

Type GS

G Gauge  
GS Gauge + Switch

**SPDT Specifications :**  
3 VA AC or DC (max)  
30 V AC or DC (max)  
0.3 Amp AC or DC (max)

Window A

F Glass (standard) A Acrylic  
T Toughened glass

**SPST Specifications :**  
10 VA AC or DC (max)  
100 V AC or DC (max)  
0.5 Amp AC or DC (max)

Seal/Diaphragm B

B Buna-N (standard) V Viton

Other switches on request

Switch 3

0 None  
1 One SPST, with a DIN plug  
3 Two SPSTs, with a DIN plug  
5 One SPDT, with a DIN plug

Ranges 2.5 mbar

Standard ranges: (Other ranges on request)

mmH <sub>2</sub> O	25	50	75	100	125	150	200	250	375	500	750	1000	1250
InH <sub>2</sub> O	1	2	3		4	5	6	8	10	15	-	-	-
mbar	-	2.5	5.0	7.5	10	12.5	15	20	25	37.5	50	75	100
Pa	125	250	500	750	-	-	-	-	-	-	-	-	-

Options BC

0 None  
D Dual scale  
M1 2" horizontal pipe mounting bracket  
M2 Surface mounting bracket  
M3 2" vertical pipe mounting bracket