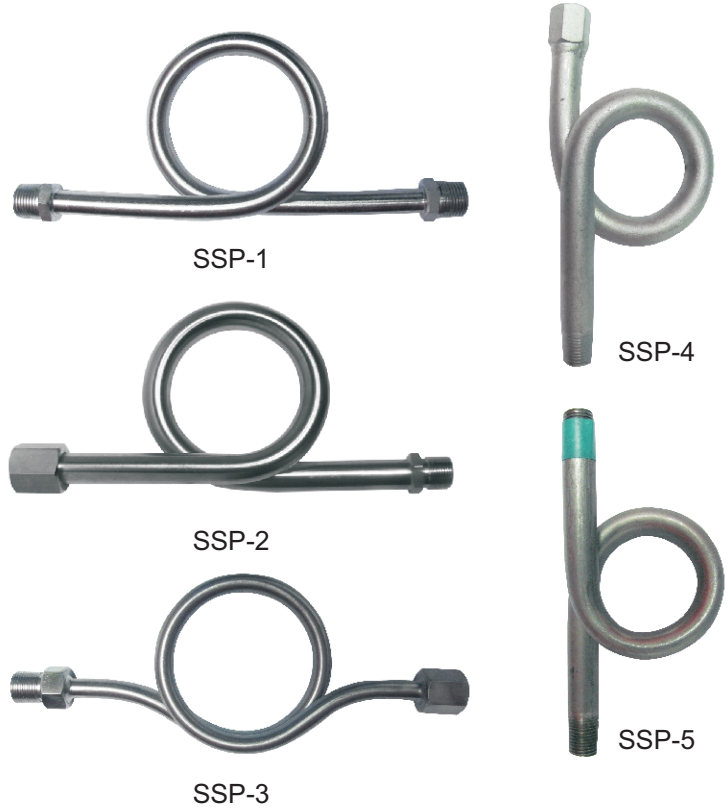


## Description & Features

Winters Syphons are recommended for applications involving temperature above applications 100 F(37 C) On steam service, the syphon will prevent hot steam from entering a pressure gauge, diaphragm seal or transmitter. Winters syphons are available in steel for non-corrosive applications and stainless steel for corrosive applications



## Specifications

### Material

Schedule 40 steel coil (welded) or  
Schedule 40 304 stainless steel (seamless)  
Other materials and schedules available upon request.

### Maximum Operating Pressure

1/4"NPT, schedule 40 welded is suitable for  
for 175psi at 340 F(171 C)

1/4" or 1/2"NPT, schedule 40, any seamless material is  
suitable for a working pressure of 500psi at 680 F (360 C)

1/4" or 1/2"NPT, schedule 80, anyseamless material is  
suitable for a working pressure of 1650psi at 630 F (332 C)

1/2"NPT, double extra schedule, anyseamless material is  
suitable for a working pressure of 3200psi at 1100 F (548 C)

### Style

180 degree coil

### Connection

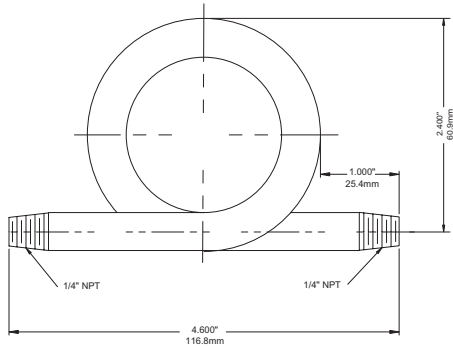
1/4"NPT male x 1/4" male  
1/2"NPT male x 1/2" male

### Options

316 Stainless steel and brass  
Schedule 160 and double extra (all materials)  
90 degree angle

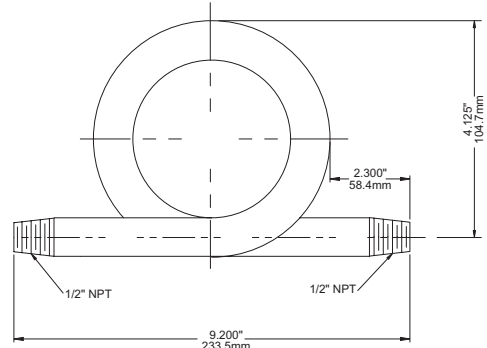
## Dimensions

1/4" Syphon



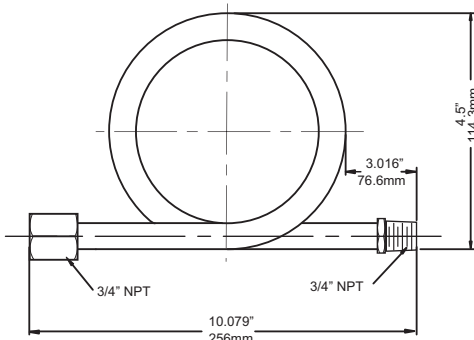
SSP-1

1/2" Syphon



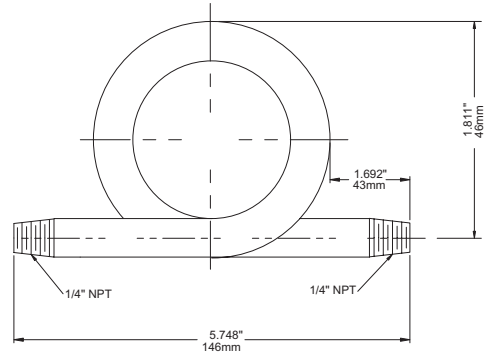
SSP-1

3/4" Syphon



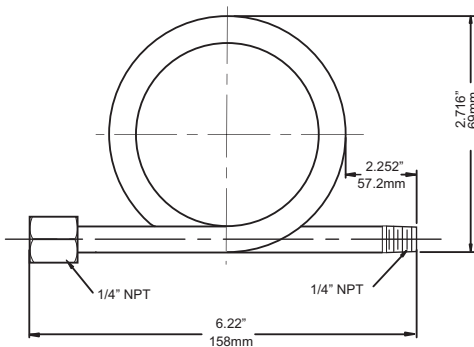
SSP-2

1/4" Syphon



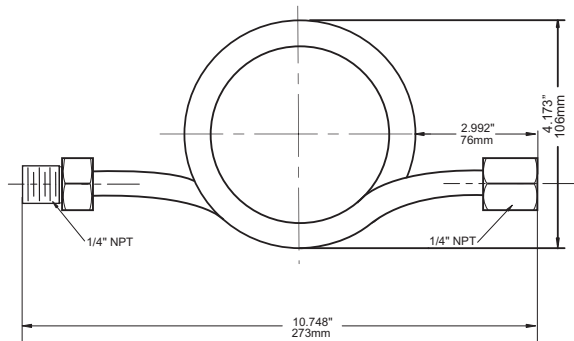
SSP-5

1/4" Syphon



SSP-4

1/4" Syphon



SSP-3

## Ordering Code SSP

	SSP	<input type="text"/>	-	<input type="text"/>	-	<input type="text"/>	-	<input type="text"/>	-	<input type="text"/>	-	<input type="text"/>	-	<input type="text"/>	-	<input type="text"/>	-	<input type="text"/>
		↑		↑		↑		↑		↑		↑		↑		↑		↑
<b>Pipe Schedule</b>																		
40	.....	40																
80	.....	80																
Double Extra	.....	20																
<b>Material</b>																		
Brass	.....			B														
Steel	.....			S														
304 stainless steel	.....			4														
316 stainless steel	.....			6														
316L stainless steel	.....			L														
<b>Connection Size</b>																		
1/4"	.....					4												
3/8"	.....					3												
1/2"	.....					2												
Special	.....					X												
<b>Connection Thread</b>																		
NPT	.....									N								
BSP	.....									B								
BSPT	.....									T								
M20 x 1.5	.....									M								
<b>Connection Type</b>																		
M x M	.....																	M
M x F	.....																	X
F x F	.....																	F
<b>Options</b>																		
90 degree angle	.....																	9