

LY42 display and control unit



www.winters.com



Winters Instruments operates globally and is distributed in over 80 countries. Please contact us for your nearest Regional Manager.

WINTERS INSTRUMENTS ASIA DIVISION
WINTERS INSTRUMENTS(SHANGHAI)INC.
#103-109, No.333 Hongqiao Road
WithHub Hi-Tech Business Center
Shanghai, 200030, China
Tel: +86-21-61042610
Fax: +86-21-61042615

WINTERS INSTRUMENTS
121 Rallside Road
Toronto, Ontario, Canada
M3A 1B2

WINTERS INSTRUMENTS
CALGARY CANADA DIVISION
8-2807 107th Ave. SE
Calgary, Alberta, Canada
T2Z 4M2

WINTERS INSTRUMENTS
TORONTO CANADA DIVISION
121 Rallside Road
Toronto, Ontario, Canada
M3A 1B2

WINTERS INSTRUMENTS
NEW YORK U.S.A. DIVISION
600 Ensminger Road
Buffalo, New York, U.S.A.
14150

WINTERS INSTRUMENTS
HOUSTON U.S.A. DIVISION
11050 West Little York Road
Building B-7
Houston, Texas, U.S.A.
77041

WINTERS INSTRUMENTS
EUROPE & THE MIDDLE EAST DIVISION
121 Rallside Road
Toronto, Ontario, Canada
M3A 1B2

WINTERS INSTRUMENTS
LATIN AMERICA DIVISION
Albarelos 1906 1 Psio
E3, E4, E5
B1640BIN, Martinez
Buenos Aires, Argentina

WINTERS INSTRUMENTS
MEXICO DIVISION
600 Ensminger Road
Buffalo, New York, U.S.A.
14150

1、Brief

Winters series universal intelligent 2-wire LED digital display is fit for all of the transmitters and converters with 4~20mA 2-wire technique, just as pressure, differential pressure, temperature, flow, PH, acceleration and so on. 16 Bit ADC MCU inside. Customer can use the two buttons to program the zero point, Span, decimal point, damping and alarm point etc. instead of the potentiometer.

2. feature

- 1) 2-wire, no additional power supply required, just as traditional LCD display.
- 2) Visible in the dark environment.
- 3) 16 Bit ADC MCU inside.
- 4) The scope of the value can be displayed on the LED is -1.9.9.9. ~ 9.9.9.9.
- 5) LED can work at 3mA
- 6) Two OPTO switch outputs.

3. Setting

In the following description, "A" denote the button " \wedge ", "B" denote the button " \vee ", and "A+B" denote pressing the button " \wedge " and button " \vee " at the same time.

3.1 power on

After the digital LED display was connected to the current circle 4~20mA, the name of the manufacturer is displayed, and enter into the interface of display.

3.2 Zero-point(value to be displayed for 4mA)

Press button "A+B", unit \boxed{SEEN} is displayed.

"A+B" menu item for setting: \boxed{SEEN}

"A" to move the cursor, "B" to change the value that the cursor point to. For example: -100.0Kpa.

$\boxed{0400}$

"A+B" to confirm and store setting and return to the menu item.

3.3 Span(value to be displayed for 20mA)

Press button "A", unit \boxed{SEES} is displayed.

"A+B" menu item for setting: $\boxed{2000}$

"A" to move the cursor, "B" to change the value that the cursor point to.

For example: 100.0Kpa $\boxed{1000}$

"A+B" to confirm and store setting and return to the menu item.

3.4 decimal point

Press button "A", unit $\boxed{d000}$ is displayed.

"A+B" menu item for setting: $\boxed{- - - -}$

"A" to move the decimal toward left, "B" to move the decimal toward right.

"A+B" to confirm and store setting and return to the menu item.

3.5 Damping

Press button "A", unit $\boxed{d000}$ is displayed.

"A+B" menu item for setting: $\boxed{2000}$

"A" to move the cursor, "B" to change the value that the cursor point to. (Min=0s, Max=20s, step 0.5s)

"A+B" to confirm and store setting and return to the menu item.

3.6 Alarm

Press button "A", unit $\boxed{HIL0}$ is displayed.

"A+B" menu item for setting: $\boxed{00FF}$

"A" or "B" to change the setting either "on" or "off". "on" means the parameter followed is valid, and the Alarm was expressed by the twinkle of the last decimal point.

And "off" cancel the alarm function.

"A+B" to confirm and store setting and return to the menu item.

3.7 The first alarm point

Press button "A", unit \boxed{SEPL} is displayed.

The method of setting is the same as step 3.2

3.8 The second alarm point

Press button "A", unit \boxed{SEPH} is displayed.

The method of setting is the same as step 3.7.

3.9 The direction of the first alarm point

Press button "A", unit $\boxed{L010}$ is displayed.

"A+B" menu item for setting: $\boxed{0000}$

"A" or "B" to change the setting either "up" or "dn". "up" means alarm while the value change from small to big, and "dn" means alarm while the value change from big to small.

"A+B" to confirm and store setting and return to the menu item.

3.10 the direction of the second alarm point

Press button "A", unit $\boxed{H010}$ is displayed.

Other is the same as 3.9.

3.11 The delay

Press button "A", unit $\boxed{DEL0}$ is displayed.

"A" menu item for setting.

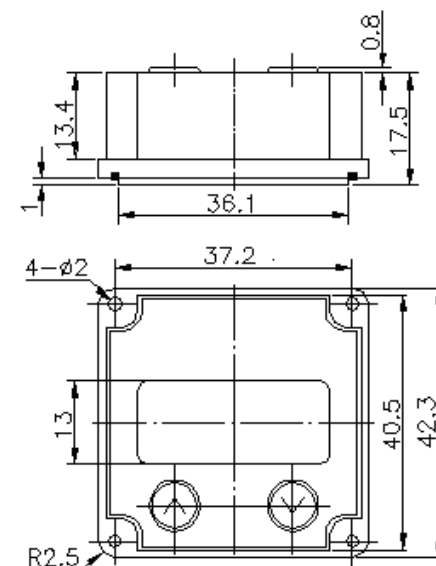
"A" to move the cursor, "B" to change the value that the cursor point to. (Min=0s, Max=30s)

"A+B" to confirm and store setting and return to the menu item.

"A" return to the original interface. And all setting is completed.

4 Dimension (see page 6)

Unit: mm



5 Installation Diagram

